

**UNITED STATES COURT OF APPEALS
FOR THE DISTRICT OF COLUMBIA CIRCUIT**

STATE OF MARYLAND,)
)
 Petitioner)
)
 v.)
)
 DANIEL ELWELL,)
 Acting Administrator of the Federal)
 Aviation Administration, and)
)
 FEDERAL AVIATION)
 ADMINISTRATION)
)
 Respondents)

18-1173

PETITION FOR REVIEW

Pursuant to 49 U.S.C. § 46110 and Rule 15(a) of the Federal Rules of Appellate Procedure, the State of Maryland (“State”) hereby petitions the United States Court of Appeals for the District of Columbia Circuit for review of the Federal Aviation Administration’s (“FAA”) publication and implementation changes to its approach procedures for Runway 19 at the Ronald Reagan Washington National Airport and related actions, documented in a series of amendments published in succession in 2015, and FAA’s failure to conduct the appropriate environmental review pursuant to the National Environmental Policy Act (“NEPA”) prior to implementing the amended procedures.

FAA's final decisions are set forth in: (i) the schematic drawing labeled as "LDA Z RWY 19," Amendment 3A, dated June 25, 2015 and attached as Attachment A to this Petition; (ii) the schematic drawing labeled as "RNAV (RNP) RWY 19," Amendment 2A, dated August 20, 2015 and attached as Attachment B to this Petition; and (iii) the schematic drawing labeled as "RIVER VISUAL RWY 19", Amendment 5, dated December 10, 2015 and attached as Attachment C to this Petition.

RULE 26.1 DISCLOSURE STATEMENT

The State is not a "nongovernmental corporate party," and therefore is not required to file a corporate disclosure statement pursuant to Federal Rule of Appellate Procedure 26.1(a).

Dated: June 26, 2018

Respectfully submitted,

Brian E. Frosh
Attorney General of Maryland

Louisa H. Goldstein
lgoldstein@bwiairport.com
Robert J. Sager
rsager@bwiairport.com
Assistant Attorneys General
Maryland Aviation Administration
P.O. Box 8766
BWI Airport MD 21240
410-859-7066

/s/ W. Eric Pilsk _____

W. Eric Pilsk
epilsk@kaplankirsch.com
John E. Putnam
jputnam@kaplankirsch.com
Nicholas A. DiMascio
ndimascio@kaplankirsch.com
KAPLAN, KIRSCH & ROCKWELL, LLP
1001 Connecticut Avenue, NW, Suite 800
Washington, DC 20036
(202) 955-5600
(202) 955-5616 (fax)

Attorneys for Petitioner State of Maryland

CERTIFICATE OF SERVICE

I hereby certify, in accordance with Fed. Rule of App. Proc. 15(c)(1), that a true copy of the foregoing Petition for Review was served by U.S. mail and via Electronic Mail on this 26th day of June, 2018 on the following:

Daniel K. Elwell
Acting Administrator
Federal Aviation Administration
Room E1010
800 Independence Avenue, SW
Washington, D.C. 20591
(202) 267-3111
daniel.elwell@faa.gov

and was served by overnight delivery on this 26th day of June, 2018 on the following:

Charles M. Trippe, Jr., Chief Counsel
Federal Aviation Administration
Office of the Chief Counsel
800 Independence Avenue, S.W.
Washington, D.C. 20591

James A. Lofton, Assistant Chief Counsel
Federal Aviation Administration
Office of the Chief Counsel
800 Independence Avenue, S.W.
Washington, D.C. 20591

/s/ W. Eric Pilsk

W. Eric Pilsk

LOC/DME I-VVWH	APP CRS	Rwy Idg	6869
108.5	145°	TDZE	13
Chan 22		Apt Elev	15

LDA Z RWY 19

RONALD REAGAN WASHINGTON NATIONAL (DCA)

⚠ Inoperative table does not apply. Circling NA northeast of Rwy 15-33. Helicopter visibility reduction below 1 SM NA. Night landing: Rwy 4, 1.5 NA. DME required.

MALSF
MISSED APPROACH: Climbing right turn to 3000 on DCA VOR/DME R-185 to BADDN/DCA VOR/DME 5.9 DME and hold, continue climb-in-hold to 3000.

D-ATIS	POTOMAC APP CON	WASHINGTON TOWER	GND CON	CLNC DEL	CPDLC
132.65	(WEST/SOUTH) (EAST)	119.1 257.6	121.7 257.6	128.25	
	119.85 319.1 124.2 269.0				

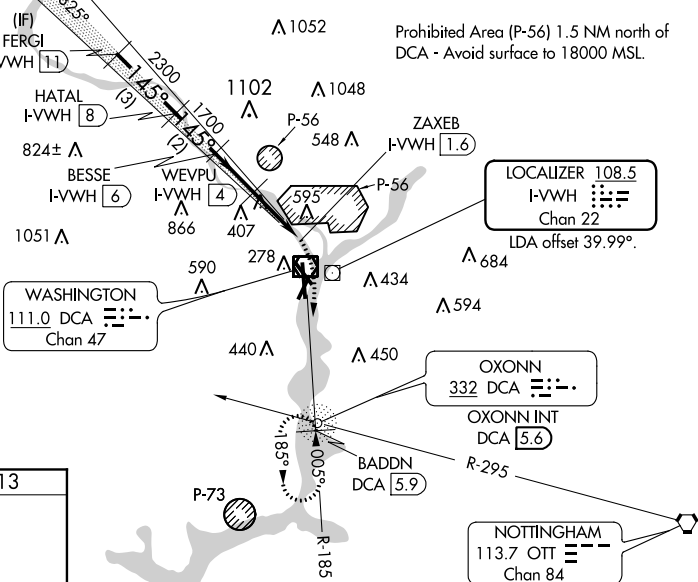
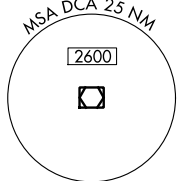
RADAR REQUIRED

ALTERNATE MISSED APCH FIX



OXONN
DCA **332**

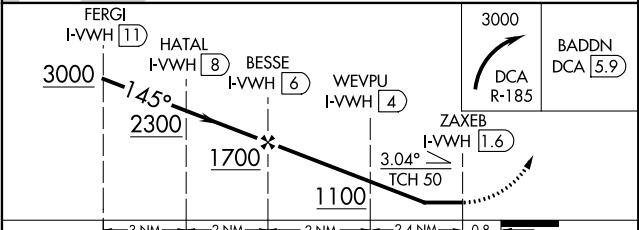
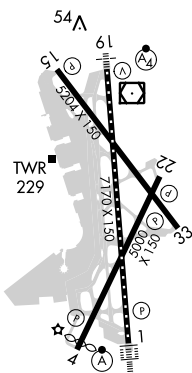
Prohibited Area (P-56) 1.5 NM north of DCA - Avoid surface to 18000 MSL.



NE-3: 27 APR 2017 to 25 MAY 2017

NE-3: 27 APR 2017 to 25 MAY 2017

ELEV 15	D	TDZE 13
---------	----------	---------



CATEGORY	A	B	C	D
S-LDA 19	720/55	707 (800-1¼)	720-2	707 (800-2)
C CIRCLING	720-1	705 (800-1)	840-2½ 825 (900-2½)	900-3 885 (900-3)

TDZ/CL Rwy 1
MIRL Rwy 4-22
REIL Rwys 4, 22, 15 and 33
HIRL Rwys 1-19 and 15-33

WASHINGTON, DC
Amdt 3A 25JUN15

RONALD REAGAN WASHINGTON NATIONAL (DCA)
38°51'N-77°02'W
LDA Z RWY 19

APP CRS Rwy Idg **6869**
185° TDZE **13**
 Apt Elev **15**

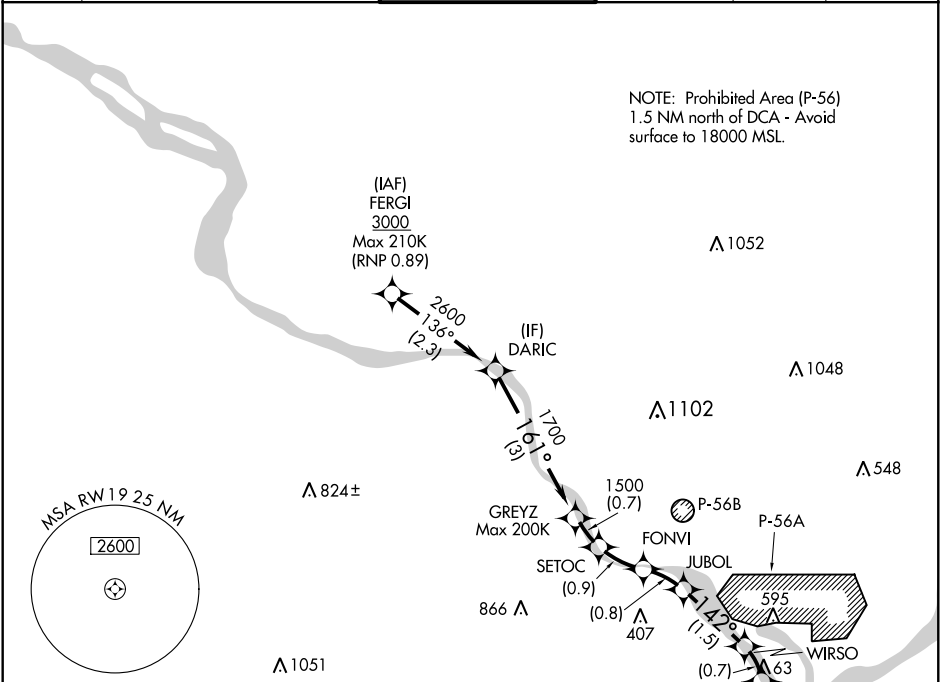
RNAV (RNP) RWY 19

RONALD REAGAN WASHINGTON NATIONAL (DCA)

▽ For uncompensated Baro-VNAV systems, procedure N/A below -9°C (16°F) or above 54°C (130°F). Inoperative table does not apply. RF and GPS required.

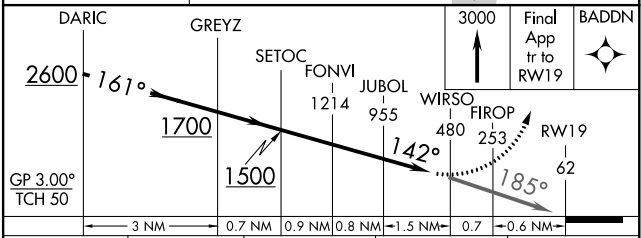
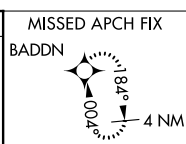
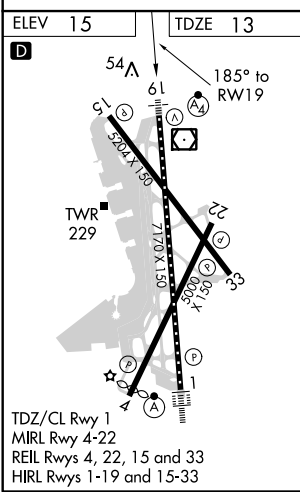
MALSF MISSED APPROACH: Climb to 3000 on the final approach track to RWY19 then direct BADDN and hold, continue climb-in-hold to 3000.

D-ATIS 132.65	POTOMAC APP CON 119.85 319.1 (WEST/SOUTH) 124.2 269.0 (EAST)	WASHINGTON TOWER 119.1 257.6	GND CON 121.7 257.6	CLNC DEL 128.25	CPDLC
-------------------------	--	--	-------------------------------	---------------------------	-------



NE-3: 27 APR 2017 to 25 MAY 2017

NE-3: 27 APR 2017 to 25 MAY 2017



CATEGORY	A	B	C	D
RNP 0.11 DA		491-1½	478 (500-1½)	
RNP 0.30 DA		550-1¾	537 (600-1¾)	

AUTHORIZATION REQUIRED

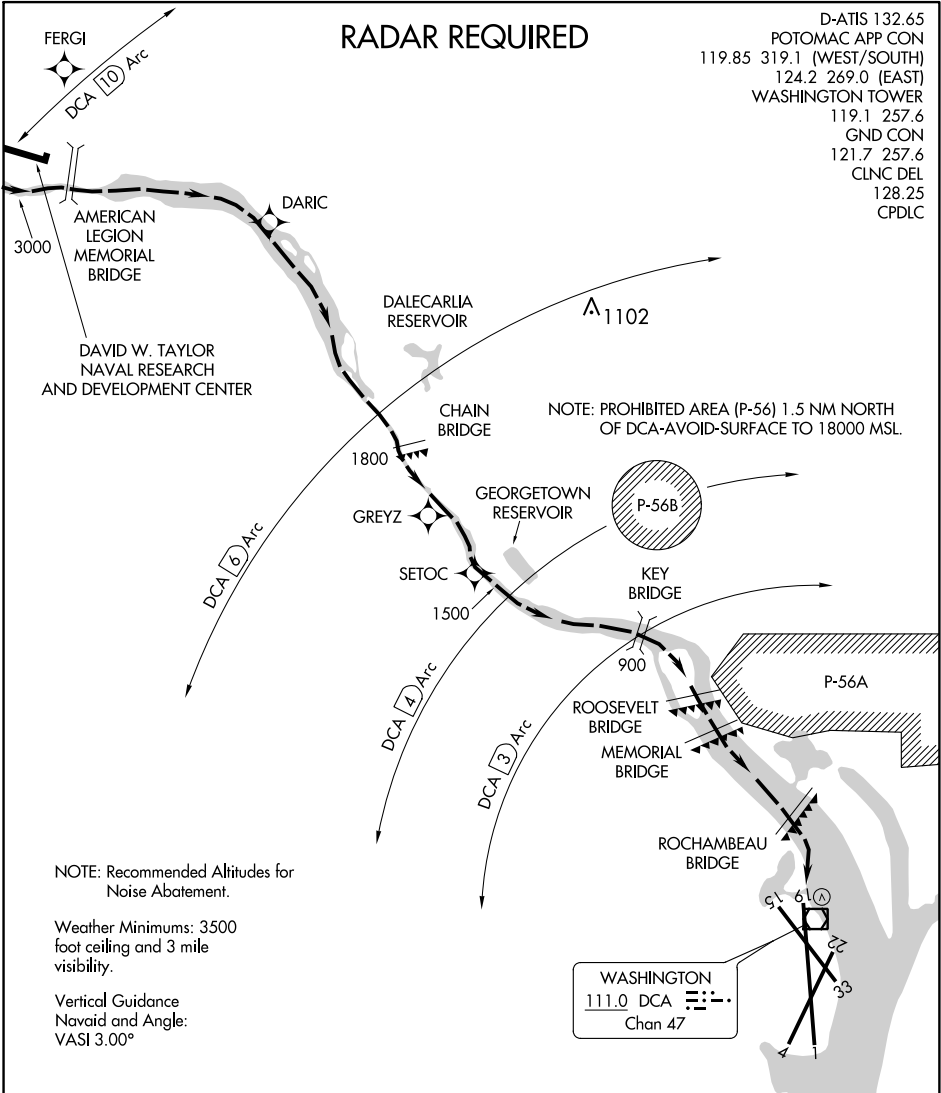
WASHINGTON, DC
Amdt 2A 20AUG15

RONALD REAGAN WASHINGTON NATIONAL (DCA)
 38°51'N-77°02'W
RNAV (RNP) RWY 19

RIVER VISUAL RWY 19

RADAR REQUIRED

D-ATIS 132.65
 POTOMAC APP CON
 119.85 319.1 (WEST/SOUTH)
 124.2 269.0 (EAST)
 WASHINGTON TOWER
 119.1 257.6
 GND CON
 121.7 257.6
 CLNC DEL
 128.25
 CPDLC



NOTE: Recommended Altitudes for Noise Abatement.

Weather Minimums: 3500 foot ceiling and 3 mile visibility.

Vertical Guidance
Navaid and Angle:
VASI 3.00°

NE-3, 01 FEB 2018 to 01 MAR 2018

NE-3, 01 FEB 2018 to 01 MAR 2018

1 NM	2	3	4	5	6	7	8
------	---	---	---	---	---	---	---

RIVER VISUAL RWY 19

Aircraft may visually follow the river to the airport, or may proceed via the RNAV (RNP) RWY 19 Approach to SETOC waypoint, then follow the river to the airport.

NOTE: Clearance for visual approach does not authorize penetration of P-56.

RIVER VISUAL RWY 19